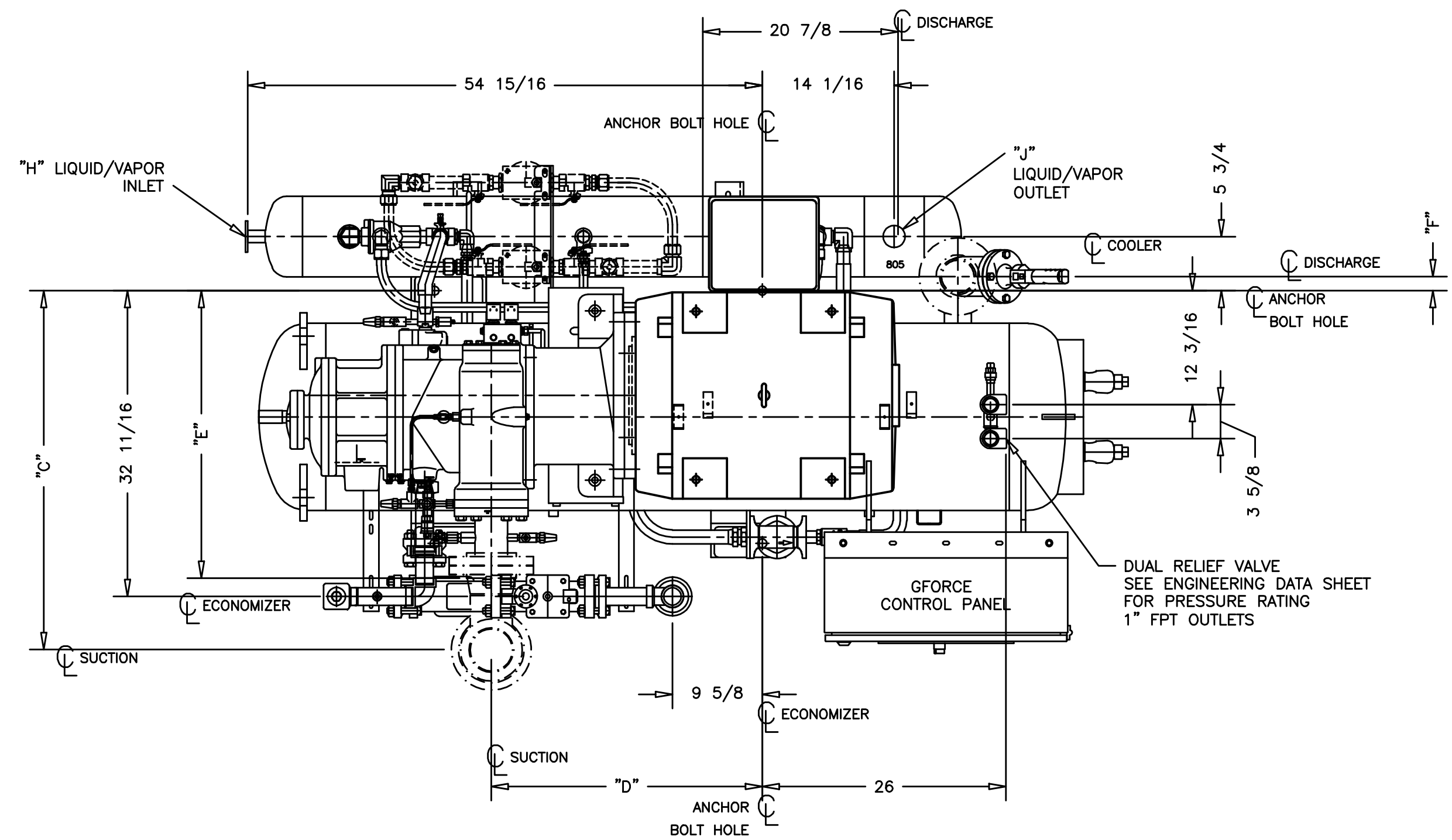


- NOTES:  
=====
- SUCTION STOP VALVE & STRAINER, DISCHARGE STOP VALVE, RELIEF PIPING & LIQUID PIPING MUST BE COMPLETELY SUPPORTED INDEPENDENTLY OF PACKAGE. COMPRESSOR MATING FLANGES MUST BE IN EXACT ALIGNMENT WITH FACES CONCENTRIC & PARALLEL WHEN ALL CAP SCREWS ARE REMOVED. IF NOT, SERIOUS MECHANICAL DISTORTION MAY OCCUR TO THE COMPRESSOR CASING WITH RESULTING DAMAGE TO THE BEARINGS, SEALS, ETC.
  - PROPER CLEARANCE MUST BE PROVIDED, AS SHOWN, TO SERVICE PACKAGE COMPONENTS WITHOUT INTERFERENCE FROM PIPING, ELECTRICAL CONDUIT, ETC.
  - A LEVEL FLOOR MOUNTING PAD MUST BE PROVIDED BY OTHERS, CAPABLE OF SUPPORTING THE OPERATING WEIGHT OF THE SCREW COMPRESSOR PACKAGE.
  - RELIEF LINE TO BE PIPED TO OUTSIDE ATMOSPHERE PER ANSI/ASHRAE, LATEST EDITION.
  - ALL DIMENSIONS INCLUDING THOSE ON FIELD CONNECTED NOZZLES ARE WITHIN  $\pm 3/4"$  TOLERANCE. IT IS RECOMMENDED THAT FIELD PIPING ALLOW FOR SOME PLAY IN FITTING PACKAGE NOZZLES, ESPECIALLY IF FIELD PIPING IS STARTED BEFORE UNIT IS IN PLACE.
  - DISCHARGE CHECK VALVE & SUCTION SPOOL PIECE WILL BE FURNISHED WITH A SLIP-ON FLANGE WHEN OPTIONAL FACTORY INSTALLED SUCTION AND DISCHARGE STOP VALVES ARE NOT PURCHASED, OR IF STOP VALVES ARE SHIPPED LOOSE. FIELD PIPING MUST BE ARRANGED TO ALLOW FOR CHECK VALVE SERVICING.
  - REMOVE VALVE BONNET/SEAT ASSEMBLY BEFORE WELDING VALVE TO SYSTEM PIPE WORK, OR RAISE VALVE STEM TO FULL OUT POSITION AND COOL VALVE WITH A DAMP RAG, TO AVOID DAMAGE TO VALVE SEAT.
  - REMOVE PANEL SHIPPING BOLTS AFTER SHIPMENT.
  - THE OIL FILTER IS INTEGRATED INTO THE COMPRESSOR, THIS FILTER IS REMOVED WHEN DUAL OIL FILTERS ARE REQUIRED.
  - THE MAIN OIL INJECTION METERING VALVE IS INTEGRATED INTO THE COMPRESSOR AND IS EXTERNALLY ADJUSTABLE.
  - 3/4" PUMPOUT CONNECTION PROVIDED ON SEPARATOR DISCHARGE LINE. VALVE SUPPLIED BY OTHERS.
  - THE COUPLING CENTER MEMBER HAS BEEN REMOVED AND SHIPPED LOOSE TO ENSURE THAT PROPER MOTOR ROTATION IS CONFIRMED PRIOR TO COMPRESSOR START-UP.
  - RECOMMENDED UNIT ANCHORING  
(4) 3/4"-10 NC HEX HD. BOLTS 2 1/2" LG., FLAT WASHER & TAPPED CONCRETE INSERT, NOT FURNISHED BY FES. CARRY FOUNDATION DOWN TO FIRM BEARING, TOP SURFACE MUST BE SMOOTH AND LEVEL. FOUNDATION PADS MAY BE CAST ON EXISTING FLOOR IN GOOD CONDITION AND SHOULD BE PINNED.
  - \_\_\_\_\_ STANDARD.
  - OPTION.



SUCTION DIMENSIONS						STD. SHIPPING & OPERATING WEIGHT LESS MOTOR & OPTIONS
MODEL	A	B	C	D	E	
55GS	59 3/16	53 3/8	39 15/16	31 1/8	32 1/4	2270#
60GS	59 3/16	53 3/8	39 15/16	30	32 1/4	2280#
75GS	62 3/16	56 3/8	38 3/8	30 1/16	30 3/4	2570#
85GS	62 3/16	56 3/8	38 3/8	28 15/16	30 3/4	2590#

DISCHARGE DIMENSIONS				
MODEL	CHECK VALVE	F	G	ADD FOR DISCHARGE SIZE
55GS, 60GS & 75GS	2	45 1/2	35	26#
	2 1/2	45 5/8	35 1/8	27#
85GS	3	44 1/2	34	21#

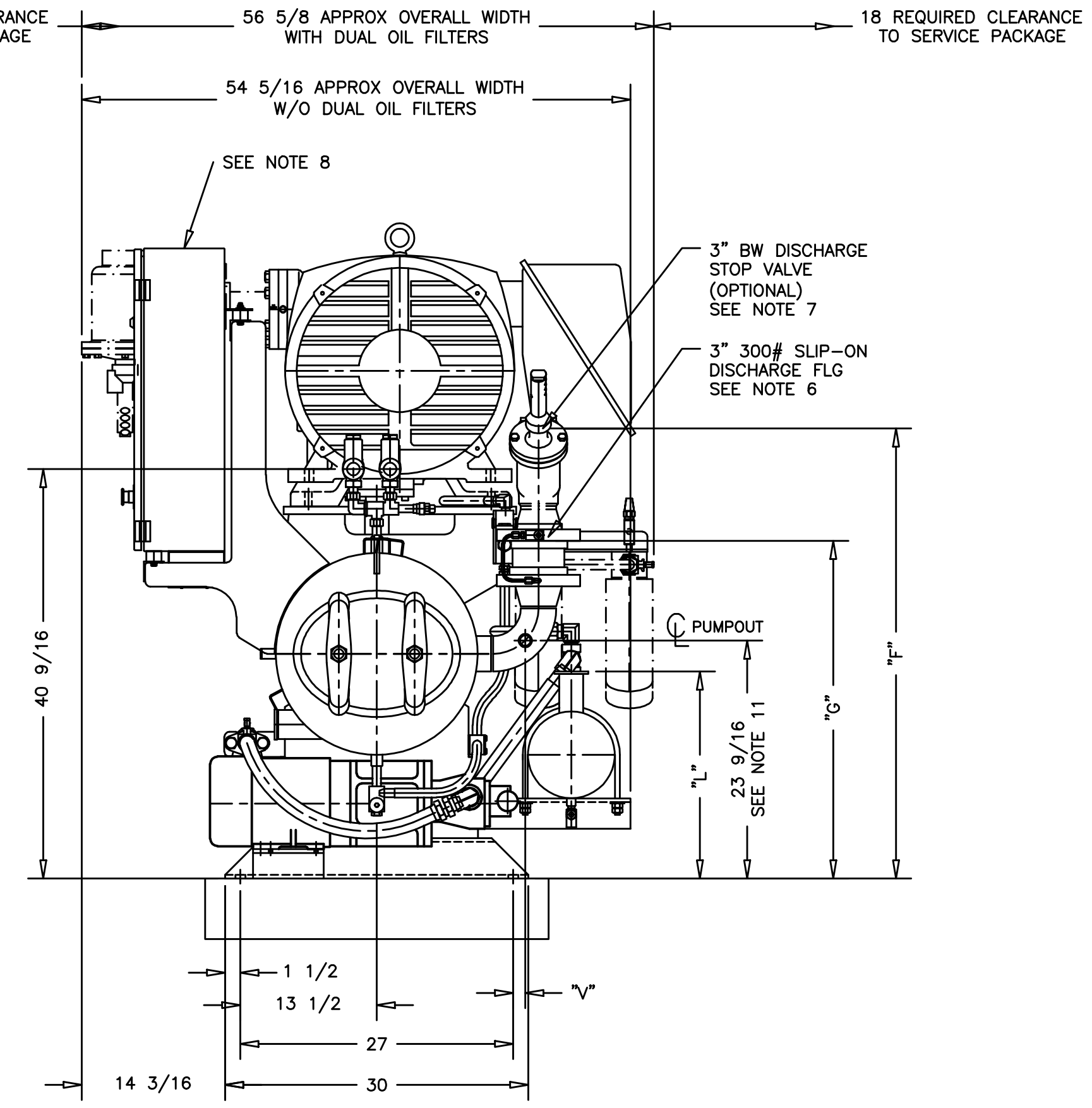
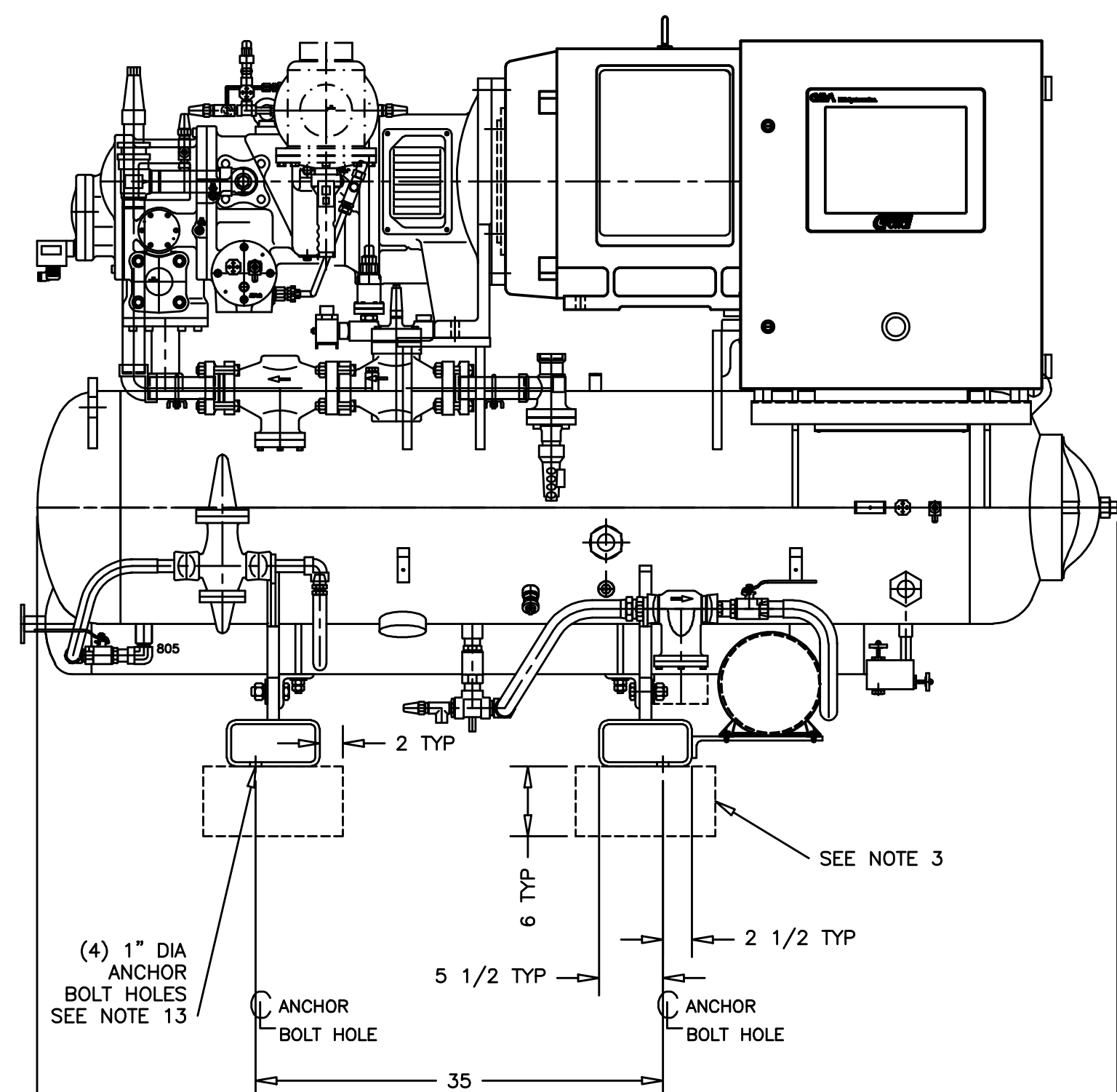
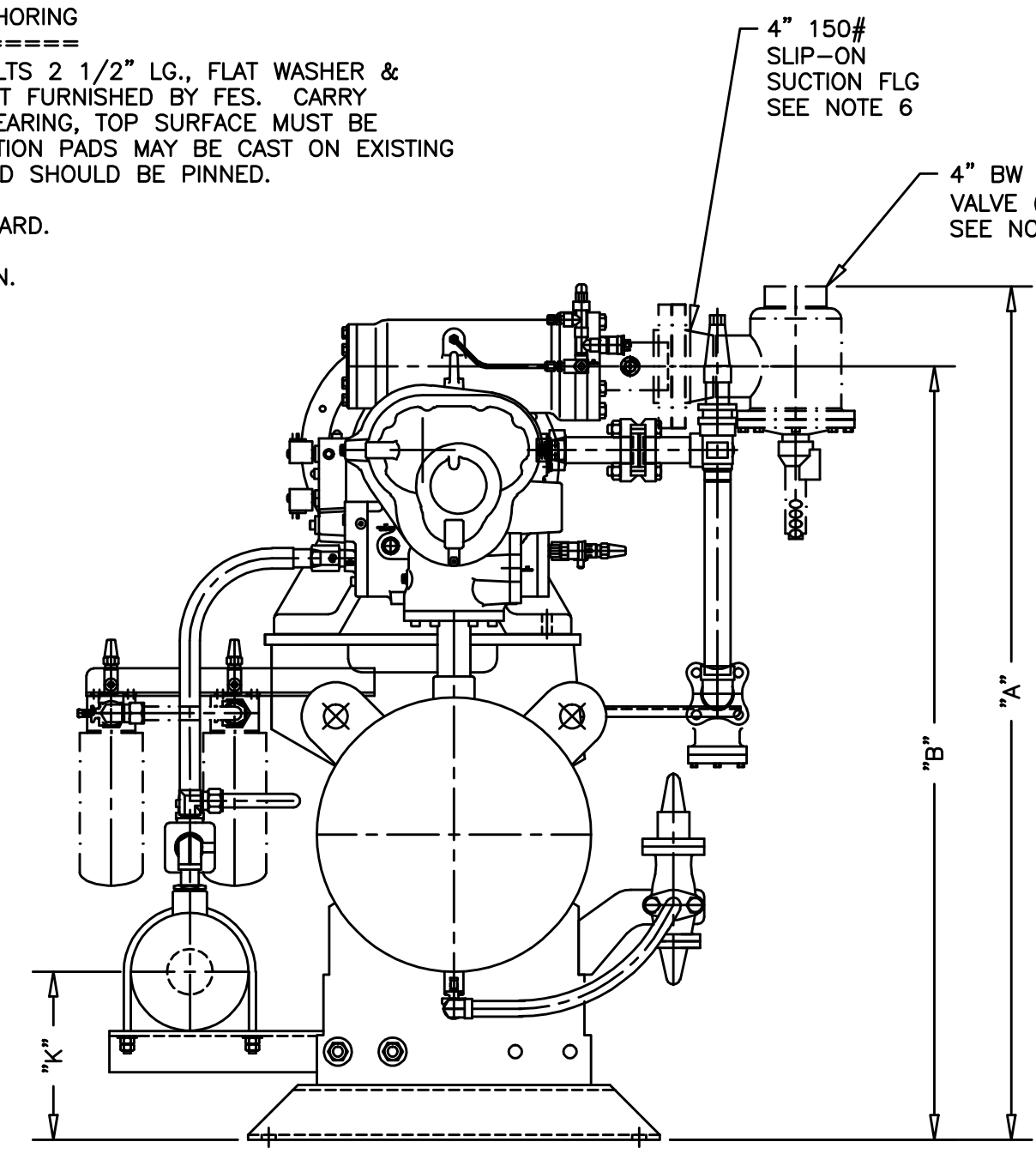
MOTOR FRAME	HP	WEIGHT
284TSC	30	500#
285TSC	40	500#
324TSC	50	500#
326TSC	60	530#
364TSC	75	620#
365TSC	100	880#
404TSC	125	930#
405TSC	150	1010#
444TSC	200	1320#

COOLER DIMENSIONS					
COOLER	H	J	K	L	ADD FOR OIL COOLER
605	1	2	11 1/4	18 1/4	487#
805	1	2	12 1/4	20 1/4	735#

ADD FOR ECONOMIZER VALVE STATION	60#
----------------------------------	-----

ADD FOR DUAL OIL FILTERS	35#
--------------------------	-----

ADD FOR MOUNTED STOP VALVES	
4" SUCTION	50#
3" DISCHARGE	36#



REV	DATE	REVISION	BY	AP	REV	DATE	REVISION	BY	AP
A	08-07-08	ADDED SEPARATOR DISCHARGE BYPASS LINE PER ECN # 08-066	SAW	SMG					
B	04-22-09	TITLE BLOCK CHANGE FOR GA & SCHEMATIC PER ECN # 09-035	BSP	SMG					

SPECIFICATIONS  
UNLESS OTHERWISE SPECIFIED DIMENSIONS ARE IN INCHES  
TOLERANCE =  $\pm 3/4$   
MATERIAL =  
WEIGHT = SEE CHART  
DO NOT SCALE



GENERAL ARRANGEMENT 55GS THRU 85GS R-507 THERMOSIPHON HIGH STAGE/BOOSTER		DATE 12-06-2007	SIZE D	DRAWING NUMBER 011-02921	REV. B
		DRAWN SAW		SHEET NUMBER 1 OF 1	
		APPROVED MCR			
		SCALE NO SCALE	ORIG. NO.		ORIG. REV.